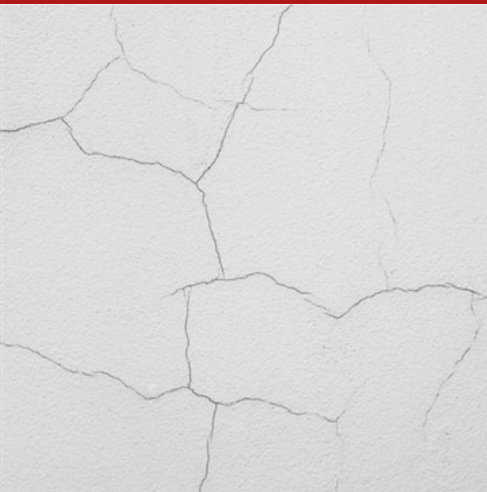


Sanaxil Filler

Microporous anti-crackling base for walls and vertical surfaces



Anti-crackling base, based on siliceous aggregates of different particle sizes, potassium silicate, nylon microfibre and specific agents, in a special mix ensuring watertightness, water-repellence, permeability to steam. Available in two different particle sizes, on request. Specific for the reclamation of internal and external vertical surfaces, characterised by significant presence of cracklings from shrinkage (also of width up to 1 mm), for homogenising regularisation in general. It can also be used as a base to obtain a rustic effect of the finish. Particularly suitable for the anti-cracking reclamation of historic buildings.

CUSTOMS CODE: 3209 9000

COMPONENTS: Single-component

APPEARANCE: Liquid

AVAILABLE COLORS: Request available colors

PACKAGING AND DIMENSIONS: Pail 25 kg - Pail 5 kg

FEATURES AND BENEFITS

Due to its mineral nature and the chemical adhesion it provides, Sanaxil Filler represents a significant revolution in the traditional concepts of adhesion to supports: it penetrates deeply into the pores, it reacts with the components of the masonry structure creating a homogeneous, indissoluble and breathable "silicated" whole; it does not form films, it is water repellent and resistant to moulds and micro-organisms. When it is applied in combination with paints or putty coats, it substantially improves their durability, because it gives a greater thickness to coatings and paints. Sanaxil Filler is composed of stabilised potassium silicate, silica aggregates and natural pigments. It has high breathability, excellent mildewcide and antibacterial properties. It has no solvents, thinners, harmful substances in general.

FIELDS OF APPLICATION

Subbase micro-smoothing, for subsequent coatings with paint or with putty coat, specific for the anti-crackling reclamation of large vertical surfaces of buildings and condominiums in general. It creates of a thick base to improve the durability of the coating.

ALLOWED SUPPORTS

Plasters - Concrete - Cement-based or lime-based mortars - Fiber-cement - Paint

PREPARATION OF SUPPORTS

Application surfaces should be clean, free of soiling, crumbling and non-adhering parts, dust, etc., conveniently saturated with water until they reach the condition "saturated with dry surface". It is recommended that you preliminarily treat the media with the specific fixative Sanaxil Fix (as such, or diluted with water up to a ratio 1:1).

MODE OF USE

Sanaxil Filler should only be used for reclamation and under the conditions described above. It can be applied with a roller or brush, possibly after dilution with 10-15% Sanaxil Fix.

APPLICATION METHODS

Paint roller - Spatula

TOOL CLEANING

Water

KEY FEATURES

- | | |
|--|---|
|  Density: 1.9 kg/dm ³ |  Diameter: 0.2 - 0.4 mm |
|  Highlighted product |  Shelf-life: 12 months |
|  Solvent-free |  Temperature of use: +5 / +30 °C |
|  Use wearing protective glasses |  Use wearing protective gloves |

TECHNICAL SPECIFICATIONS

a 20°C
Complete hardening at 20°C **16 - 32 h**

a 20°C
Touch hardening at 20°C **4 h**

CONSUMPTION

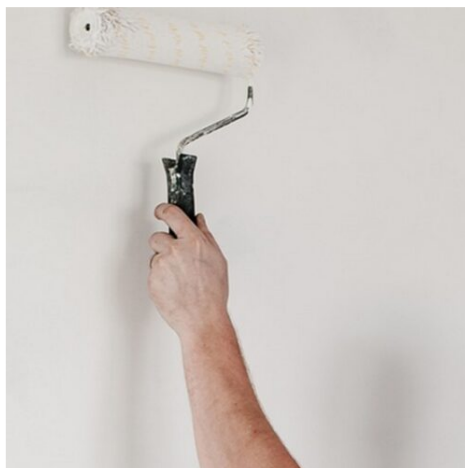
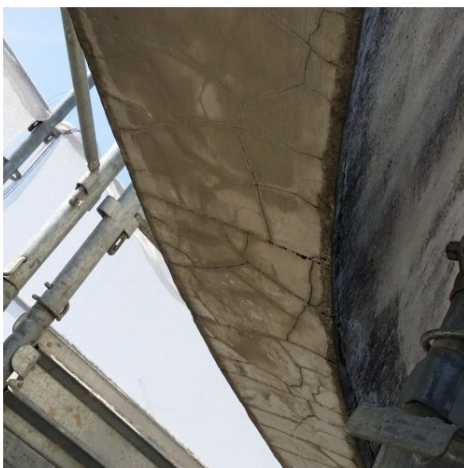
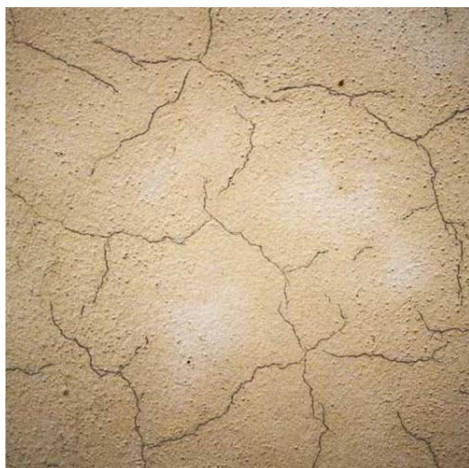
Apply from 0.30 to 0.50 kg of Sanaxil Filler per square metre of surface to be treated.

STORAGE AND CONSERVATION

Protect from freezing. Store the product in its original packing, in a fresh and dry environment, avoiding frost and direct sunlight. Inadequate storage of the product may result in a loss of rheological performance. Protect from humidity.



PHOTO GALLERY



ADDITIONAL CONTENT



Produced and distributed by **AZICHEM srl**
Via Giovanni Gentile, 16/A - 46044 Goito (MN), Italy
Tel: +39 0376.604185 / 604365
Fax: +39 0376 604398
www.azichem.com - info@azichem.com

Update of **13-11-2021**
Terms of sale and legal notices available at
<https://www.azichem.com/general-sales-conditions>
Total pages of this document: 4

WARNINGS AND PRECAUTIONS

During application, protect glass, enamelled metal, aluminium, polished tiles etc., which may be opacified from accidental contact with silicate solutions.

Avoid application in the presence of rainfall and high humidity.

Depending on the temperature conditions at the time of application, and during the drying and dessication phases, colours may vary slightly. The general information, along with any instructions and recommendations for use of this product, including in this data sheet and eventually provided verbally or in writing, correspond to the present state of our scientific and practical knowledge.

Any technical and performance data reported is the result of laboratory tests conducted in a controlled environment and thus may be subject to modification in relation to the actual conditions of implementation.

Azichem Srl does not assume any liability arising from inadequate characteristics related to improper use of the product or connected to defects arising from factors or elements unrelated to the quality of the product, including improper storage.

Those wishing to utilise the product are required to determine prior to use whether or not the same is suitable for the intended use, assuming all consequent responsibility.

The technical and characteristic details contained in this data sheet shall be updated periodically. For consultation in real time, please visit the website: www.azichem.com. The date of revision is indicated in the space to the side. The current edition cancels out and replaces any previous version.

Please note that the user is required to read the latest Safety Data Sheet for this product, containing chemical-physical and toxicological data, risk phrases and other information regarding the safe transport, use and disposal of the product and its packaging. For consultation, please visit: www.azichem.com.

It is forbidden to dispose of the product and/or packaging in the environment.

