

Sanafluens

Superfluid grout based on reinforcing, injectable hydraulic lime mortar



Powder preparation, ready-to-use, based on hydraulic lime, for the preparation, with the sole addition of water, of grout for masonry reinforcement, injectable and castable, high performance in terms of sliding, strength and stability, for ecological building interventions and the restoration of vintage buildings and monuments.

CUSTOMS CODE: 3824 5090

COMPONENTS: Single-component

APPEARANCE: Powder

AVAILABLE COLORS: Gray

PACKAGING AND DIMENSIONS: Bag 25 kg - Pallet: 50 x (Bag 25 kg)

OBTAINED CERTIFICATIONS AND REGULATIONS



FEATURES AND BENEFITS

In the Sanafluens mixtures, the water is completely and stably incorporated from the hydration reaction of lime; conversely, in traditional mixtures, a very high part of added water, is free, and evaporating, it leaves gaps in the walls. Sanafluens is based on natural hydraulic lime, sodium gluconate, kaolin, aluminates; it does not contain cement, resins, solvents and radioemissive aggregates.

FIELDS OF APPLICATION

Consolidation through injections of brick, stone or mixed masonry, "bag" structures, masonry damaged by the earthquake. Consolidation of masonry affected by capillary rising damp and soluble salts. Consolidation of plasters detached from the masonry support, even with frescoes or of historical and artistic value. Consolidation of foundation structures, pillars, vaults and arches.

ALLOWED SUPPORTS

Cement-based or lime-based mortars - Bricks - Mixed walls (bricks and stones) - Stone walls - Lime and lime-cement plasters and mortars



PREPARATION OF SUPPORTS

Clean the application surfaces by spraying abundantly with water. If there is a lack of plaster, apply a suitable render of hydraulic lime and sand (such as Untersana) to close as much as possible the escape routes of the grout once it has been injected. Trace, from bottom to top and from left to right, a 50 cm square grid. On the intersection of the squares, drill the masonry with a rotary drill, with a bit of suitable diameter (depending on the type of masonry to be injected; diameter usually between 12 and 24 mm), to a depth of at least 3/5 of its thickness, tilting the drill downwards by about 10 - 20°. Once all the holes have been drilled, they will be sucked up, blown with compressed air and sprayed with water, to remove the dust inside them produced by the drilling. Insert in the holes for a depth of about 5 cm, transparent meshed rubber tubes, with a total length of at least 30 cm (therefore with about 25 cm external). Properly seal the perimeter of the pipe with Anchorsana Fix accelerated setting grouting mortar to prevent the injected product from escaping. Inject the grout always keeping it lightly mixed and operating a continuous flow, without interruptions.

MODE OF USE

Mixing: Mixing Sanafluens must be carried out with a high-efficiency mechanical mixer (e.g. double-helix whisk with speed variator), starting mixing at a low speed, gradually increasing the speed up to a speed > 300 rpm and respecting the minimum/maximum water proportions (from 21% to 24% referred to the weight of the premix) and mixing for at least three minutes. Sanafluens acquires its exceptional flow characteristics only after effective mixing. Mix for at least 3 minutes, let the mixture rest for one minute and perform a final mix for a further minute. Once the correct workability has been obtained, before proceeding with the injection, it is recommended to pass it through a sieve with a 2 mm mesh (or similar) to intercept any lumps present in the mixture. It can be done by gravity or with mechanical means, always proceeding from the holes located at the bottom towards the upper ones and with limited pressures (always less than 1.5 atm). Therefore, choose mechanical means with the possibility of regulating pumping at low pressures. The pot life of the mixture is extended (> 1 hour) but it is recommended, during breaks in processing, to keep the mixture stirred and not to use material that has been mixed for more than 2 hours because, even if not visible to the naked eye, its exceptional characteristics of flow and penetration into micro-cavities and micro-cracks begin to disappear. To check the injectability on site, the grout must come out of the pipes adjacent to the one in which the injection is being carried out.

APPLICATION METHODS

Pour out - Injection - Pump

TOOL CLEANING

Water

KEY FEATURES



Dosage: 1.50 - 1.55 kg/dm³



Mix with water: 22-24 %



Pot-life: 60 min



Shelf-life: 12 months



Temperature of use: +6 / +30 °C



Produced and distributed by **AZICHEM srl**
Via Giovanni Gentile, 16/A - 46044 Goito (MN), Italy
Tel: +39 0376.604185 / 604365
Fax: +39 0376 604398
www.azichem.com - info@azichem.com

Update of **05-05-2025**
Terms of sale and legal notices available at
<https://www.azichem.com/general-sales-conditions>
Total pages of this document: 4

TECHNICAL SPECIFICATIONS

UNI EN 1015-11

Compressive strength **> 20 N/mm²**

EN 1745

Permeability to water vapor **15/35 μ**

UNI EN 1015-6

Density **1980 kg/m³**

UNI EN 1015-18

Water penetration after capillary absorption **2.4 mm**

EN 1745

Thermal conductivity **0.67 W/mK**

UNI EN 1015-11

Flexural strength **> 6 N/mm²**

UNI EN 1015-18

Capillary absorption **0.53 kg·h^{0.5}/m²**

UNI EN 1015-17

Chloride content **0.0082 %**

UNI EN 1015-12

Bonding force **1.2 N/mm²**

Static elastic modulus **12000 MPa**

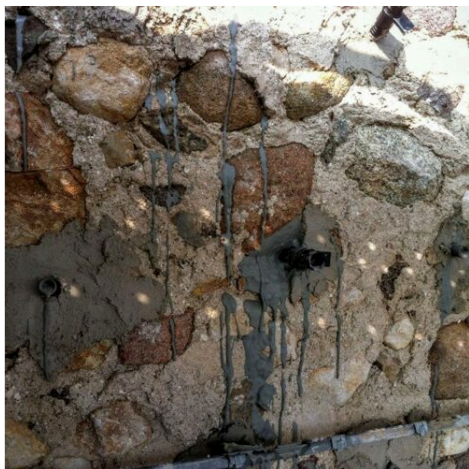
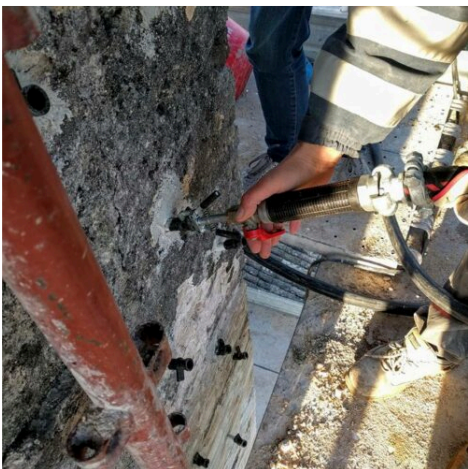
CONSUMPTION

Approximately 1500 kg of Sanafluens for each cubic metre of volume to be filled.

STORAGE AND CONSERVATION

Store the product in its original packing, in a fresh and dry environment, avoiding frost and direct sunlight. Inadequate storage of the product may result in a loss of rheological performance. Protect from humidity.

PHOTO GALLERY



WARNINGS AND PRECAUTIONS

An abundant preliminary injection of water into the holes drilled in the masonry is recommended, to allow an adequate and rapid sliding of the grout.

The general information, along with any instructions and recommendations for use of this product, including in this data sheet and eventually provided verbally or in writing, correspond to the present state of our scientific and practical knowledge.

Any technical and performance data reported is the result of laboratory tests conducted in a controlled environment and thus may be subject to modification in relation to the actual conditions of implementation.

Azichem Srl does not assume any liability arising from inadequate characteristics related to improper use of the product or connected to defects arising from factors or elements unrelated to the quality of the product, including improper storage.

Those wishing to utilise the product are required to determine prior to use whether or not the same is suitable for the intended use, assuming all consequent responsibility.

The technical and characteristic details contained in this data sheet shall be updated periodically. For consultation in real time, please visit the website: www.azichem.com. The date of revision is indicated in the space to the side. The current edition cancels out and replaces any previous version.

Please note that the user is required to read the latest Safety Data Sheet for this product, containing chemical-physical and toxicological data, risk phrases and other information regarding the safe transport, use and disposal of the product and its packaging. For consultation, please visit: www.azichem.com.

It is forbidden to dispose of the product and/or packaging in the environment.

