

# Readymesh PW-120

12mm fibrillated polypropylene micro-fibre for screeds and concrete



Readymesh PW-120 is an auxiliary fibrillated polypropylene micro-fibre, with a length of 12 mm, suitable for adding concrete in general. The addition of Readymesh PW-120 to the mixture allows for preventing the phenomenon of cracking from plastic shrinkage of the concrete, as well as having positive effects as regards the ductility of the mixture, the resistance to freezing/thawing, the shock resistance and overall watertightness.

**CUSTOMS CODE:** 5503 4000

**COMPONENTS:** Single-component

**APPEARANCE:** Fibers

**AVAILABLE COLORS:** White

**PACKAGING AND DIMENSIONS:** Hydro degradable bag 1 kg - Box: 18 x (Hydro degradable bag 1 kg) - Pallet: 30 x (Box 18 Kg)

## FIELDS OF APPLICATION

Subbase screeds (even with radiant systems), small thickness small prefabrication casts, concrete floors, ballasts in cement mix and concrete structures in general, even in combination with traditional metal reinforcement.

## ALLOWED SUPPORTS

Plasters - Concrete - Cement-based or lime-based mortars

## MODE OF USE

Add the fibres to the concrete during mixing, after you have added the aggregates provided to the mixer. Adding the fibres before adding the aggregates may cause incorrect dispersal of fibres in the matrix. The dosage, depending on use, is normally between 0.6 and 1.2 kg per cubic metre of concrete. In the case of subbase screeds in sand/cement, the recommended dosage is about 750 g per cubic metre.

## APPLICATION METHODS

To be added to other components

## KEY FEATURES



Density: 0.91 g/cm<sup>3</sup>



Unlimited shelf-life



Length: 12 mm



UV-resistant



## TECHNICAL SPECIFICATIONS

Resistant to chemical agents

Non-toxic material

Flash-point **160 °C**

Static elastic modulus **2206 - 2953 MPa**

Alkali-resistant material

Number of filaments **> 120'000'000 nr/kg**

Breaking load longitudinal **190 - 325 MPa**

Softening point **150 °C**

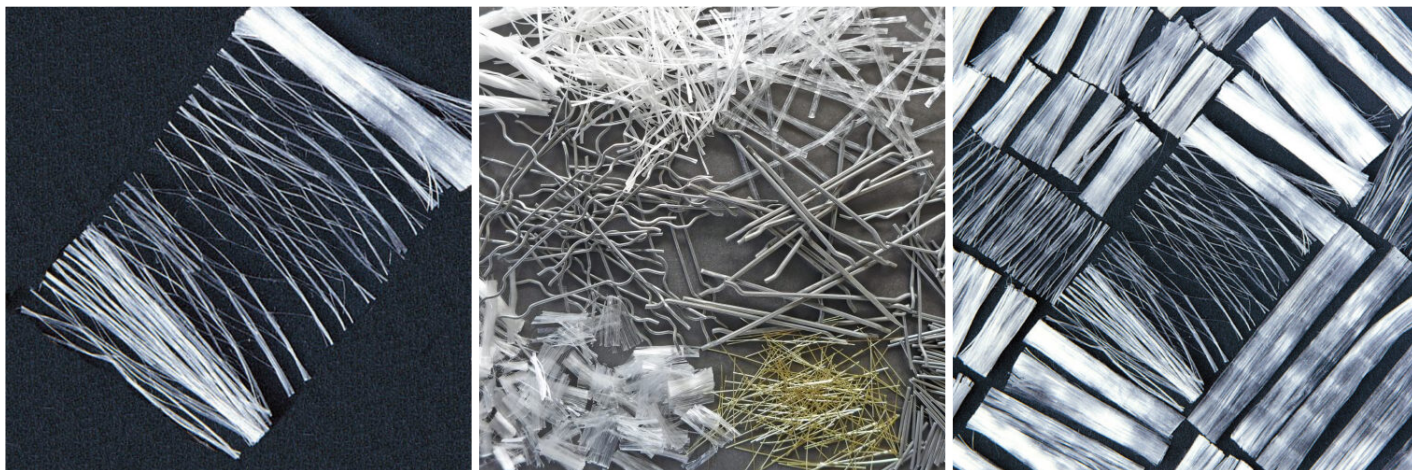
## CONSUMPTION

Variable according to the type of work to be carried out (screeds, plasters, mortars), on average from 0.6 to 1.5 kg per cubic metre of cement or hydraulic lime based conglomerate.

## STORAGE AND CONSERVATION

Store the product in its original packing, in a fresh and dry environment, avoiding frost and direct sunlight. Protect from humidity.

## PHOTO GALLERY



## WARNINGS AND PRECAUTIONS

The general information, along with any instructions and recommendations for use of this product, including in this data sheet and eventually provided verbally or in writing, correspond to the present state of our scientific and practical knowledge. Any technical and performance data reported is the result of laboratory tests conducted in a controlled environment and thus may be subject to modification in relation to the actual conditions of implementation.

Azichem Srl does not assume any liability arising from inadequate characteristics related to improper use of the product or connected to defects arising from factors or elements unrelated to the quality of the product, including improper storage. Those wishing to utilise the product are required to determine prior to use whether or not the same is suitable for the intended use, assuming all consequent responsibility.

The technical and characteristic details contained in this data sheet shall be updated periodically. For consultation in real time, please visit the website: [www.azichem.com](http://www.azichem.com). The date of revision is indicated in the space to the side. The current edition cancels out and replaces any previous version.

Please note that the user is required to read the latest Safety Data Sheet for this product, containing chemical-physical and toxicological data, risk phrases and other information regarding the safe transport, use and disposal of the product and its packaging. For consultation, please visit: [www.azichem.com](http://www.azichem.com).

It is forbidden to dispose of the product and/or packaging in the environment.

