

QL Nano Lithium Hard

Hardener, sealant, water-repellent, thickener, consolidating and protective



A hardening, anti-dust sealant and chemical thickener with lithium silicates for industrial flooring and surfaces in cement conglomerate in general, already cured and compact. Penetrates and seals concrete via chemical reaction, forming a transparent, durable, extremely hard, inorganic, breathable and abrasion-resistant surface. Excellent for concrete floors requiring long term protection against wear, exposure to unfavourable conditions, humidity, dirt build up, alkalinity and efflorescence (salt residue).

CUSTOMS CODE: 3824 9970

COMPONENTS: Single-component

APPEARANCE: Liquid

AVAILABLE COLORS: Transparent

PACKAGING AND DIMENSIONS: Plastic can 5 l - Plastic can 25 l

OBTAINED CERTIFICATIONS AND REGULATIONS



FEATURES AND BENEFITS

QL Nano Lithium Hard deeply penetrates the capillary pores of the concrete, reacting chemically with the free lime to form a permanent and insoluble bond with the concrete. It creates a protective surface layer, which is breathable, thick and resistant to abrasion. It provides a stronger finish, which is impenetrable and pleasant from an aesthetic point of view (smooth-polished) capable of resisting dust, stains and wear. It reduces maintenance intervention and cleaning and repair costs.

FIELDS OF APPLICATION

Hardening, sealing, consolidating and dust-proof treatment of industrial floors and screeds in concrete, both old and new, both grey and coloured.

ALLOWED SUPPORTS

Concrete - Floor screed

PREPARATION OF SUPPORTS

The application surfaces should be clean, free of containment, inconsistent and incoherent parts, dust, etc., conveniently saturated with water to reach the "saturated to dry surface" condition.

MODE OF USE

Apply QL Nano Lithium Hard using a sprayer, roller or brush on the existing concrete surfaces. Always check the surfaces of the concrete are suitable and capable of offering the desired results. Before inspecting and approving the desired application, leave the surface to dry perfectly. The application time on the hardened support should be 24 hours at least in the summer time. 4 - 7 days recommended for the rest of the year. **NEW CONCRETE SURFACES** QL Nano Lithium Hard can be applied on the concrete surfaces when immediately created after the last finish with the trowel. Carefully clean the substrate, eliminating all the foreign materials such as non-stick products, hardeners, oil, dust, construction efflorescence, gypsum wall residue etc. Use an airless sprayer or type HVLP to apply QL Nano Lithium Hard, in such a way to form a regular, even, compact and polished layer, ensuring total saturation of the surface. Apply a quantity of QL Nano Lithium Hard sufficient to keep the surface wet for 20 minutes. Leave the surfaces to dry (generally for 1 or 2 hours). Proceed by applying a hardening agent according to the standard ASTM C 309. **EXISTING CONCRETE SURFACES** - Carefully clean the substrate, eliminating all the foreign materials such as non-stick products, hardeners, oil, dust, construction efflorescence, gypsum wall residue, etc. Before proceeding, ensure the surface is dry. - Use a low pressure sprayer to apply QL Nano Lithium Hard in such a way to saturate the surface. - Distribute QL Nano Lithium Hard on the surface using an automatic floor washer or a hard brush to facilitate penetration. - Leave the QL Nano Lithium Hard to act for 20-30 minutes. - Keep the surface wet with QL Nano Lithium Hard for 20 - 30 minutes (if necessary, add other product). - Remove the QL Nano Lithium Hard residue with clean water. - Leave the surface to dry.

APPLICATION METHODS

Low pressure airless nebulizer - Scrubbing brush - Sprayer

TOOL CLEANING

Water

KEY FEATURES



Density: 1.11 kg/dm³



Shelf-life: 12 months



UV-resistant



Nonflammable



Solvent-free

TECHNICAL SPECIFICATIONS

pH 11

CONSUMPTION

Apply from 0.07 to 0.09 litres of QL Nano Lithium Hard per square metre of surface to be treated.

STORAGE AND CONSERVATION

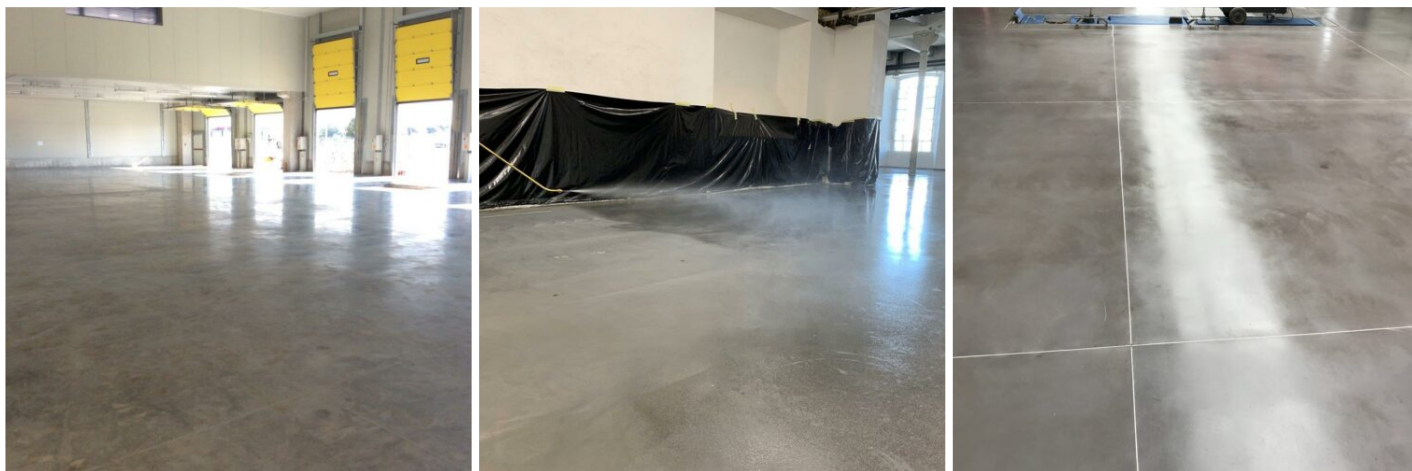
Protect from freezing. Store the product in its original packing, in a fresh and dry environment, avoiding frost and direct sunlight. Inadequate storage of the product may result in a loss of rheological performance.



Produced and distributed by **AZICHEM srl**
Via Giovanni Gentile, 16/A - 46044 Goito (MN), Italy
Tel: +39 0376.604185 / 604365
Fax: +39 0376 604398
www.azichem.com - info@azichem.com

Update of **11-07-2022**
Terms of sale and legal notices available at
<https://www.azichem.com/general-sales-conditions>
Total pages of this document: 4

PHOTO GALLERY



ADDITIONAL CONTENT



Produced and distributed by **AZICHEM srl**
Via Giovanni Gentile, 16/A - 46044 Goito (MN), Italy
Tel: +39 0376.604185 / 604365
Fax: +39 0376 604398
www.azichem.com - info@azichem.com

Update of **11-07-2022**
Terms of sale and legal notices available at
<https://www.azichem.com/general-sales-conditions>
Total pages of this document: 4

WARNINGS AND PRECAUTIONS

PRECAUTIONS FOR HEALTH AND SAFETY

QL Nano Lithium Hard is an aqueous solution of lithium silicate that uses proprietary compounds. It is an alkaline treatment that can irritate the eyes and skin. **KEEP OUT OF REACH OF CHILDREN.** QL Nano Lithium Hard corrodes glass and painted surfaces. Wash the product away immediately with water if there are accidental sprays on glass or painted surfaces. Attention: surfaces treated with QL Nano Lithium Hard may be slippery. Sale and re-sale to the public is forbidden. This product is only intended for professional use and must be applied by an authorised person or an authorised technical support worker. The general information, along with any instructions and recommendations for use of this product, including in this data sheet and eventually provided verbally or in writing, correspond to the present state of our scientific and practical knowledge.

Any technical and performance data reported is the result of laboratory tests conducted in a controlled environment and thus may be subject to modification in relation to the actual conditions of implementation.

Azichem Srl does not assume any liability arising from inadequate characteristics related to improper use of the product or connected to defects arising from factors or elements unrelated to the quality of the product, including improper storage.

Those wishing to utilise the product are required to determine prior to use whether or not the same is suitable for the intended use, assuming all consequent responsibility.

The technical and characteristic details contained in this data sheet shall be updated periodically. For consultation in real time, please visit the website: www.azichem.com. The date of revision is indicated in the space to the side. The current edition cancels out and replaces any previous version.

Please note that the user is required to read the latest Safety Data Sheet for this product, containing chemical-physical and toxicological data, risk phrases and other information regarding the safe transport, use and disposal of the product and its packaging. For consultation, please visit: www.azichem.com.

It is forbidden to dispose of the product and/or packaging in the environment.

