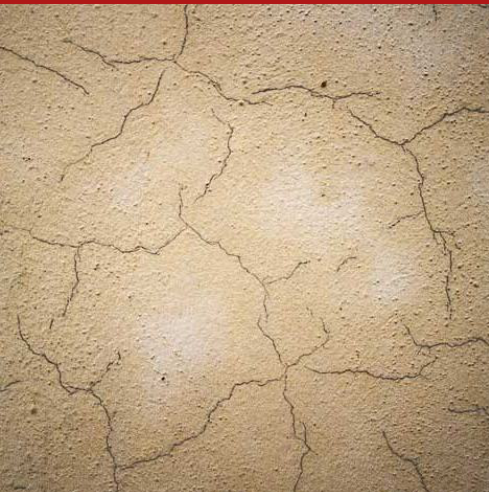


Protech Sil Filler

Siloxane anti-crackling bed for external and internal façades



"Anti-crackling" basecoat based on siloxane water-thinnable resins, microfibre nylon, acrylic dispersions, fillers and specific additives, in a special highly water repellent mix ("lotus" effect). The special covering, filling (filler) and vapour permeability capabilities, make it specific for renovating cracklings and small cracks, resulting from plastic and hygrometric shrinkage on existing plaster, before the next painting or coating with putty coat.

CUSTOMS CODE: 3209 9000

COMPONENTS: Single-component

APPEARANCE: Liquid

AVAILABLE COLORS: Request available colors

PACKAGING AND DIMENSIONS: Pail 25 kg

FEATURES AND BENEFITS

The peculiar composition of Protech Sil Filler provides the performance of a real microporous filter, impervious to rain, it is exceptionally permeable to vapour: the "Sd" value is about ten times lower than that characteristic of normal acrylic paints. The product can then be applied on mineral media as well as on media treated with emulsion-based paints, providing a physical adhesion that is extremely permeable to vapour. Thanks to the physical structure of the binder, the silicone coating made with Protech Sil Filler, particularly resistant to light and weathering is even resistant to microorganisms.

FIELDS OF APPLICATION

Renovation of vertical external façades characterised by significant presences of cracklings from shrinkage, also of width up to 1 mm. Regularisation of patches, of areas with different particle sizes and absorption. Particularly suitable for anti-cracking reclamation in buildings subject to protection as "cultural heritage".

ALLOWED SUPPORTS

Plasters - Cement-based or lime-based mortars - Drywall - Plaster (gypsum) - Fiber-cement

PREPARATION OF SUPPORTS

The support must be intact, dry and dust-free. Any biodeteriogenic settlements such as fungi, moulds, algae, lichens, etc. should be preliminarily tempered with specific products (CONSILEX ANTIMUFFA CLEANER and CONSILEX ANTIMUFFA). Where necessary it is necessary to provide suitable reinforcements with Sanastark. Static cracks exceeding 0.5 mm should be preliminarily filled with Fibrostuck.

MODE OF USE

Apply at least 2 coats of Protech Sil Filler on the surfaces to be treated (about 125-150 g/m² per coat). It is recommended to "finish" the restoring treatment of the façade with the siloxane paint Protech Sil P.




APPLICATION METHODS




Brush - Paint roller

TOOL CLEANING

Water

KEY FEATURES

-  Density: 1.69 kg/dm³
-  Shelf-life: 12 months
-  To be applied in two coats

-  Nonflammable
-  Temperature of use: +5 / +30 °C
-  UV-resistant

TECHNICAL SPECIFICATIONS

Viscosity **4000-4600 cP**

pH **13**

10' a 150°C

Dry residue **66.5 %**

CONSUMPTION

Apply from 0.35 to 0.60 kg of Protech Sil Filler per square metre of surface to be painted.

STORAGE AND CONSERVATION

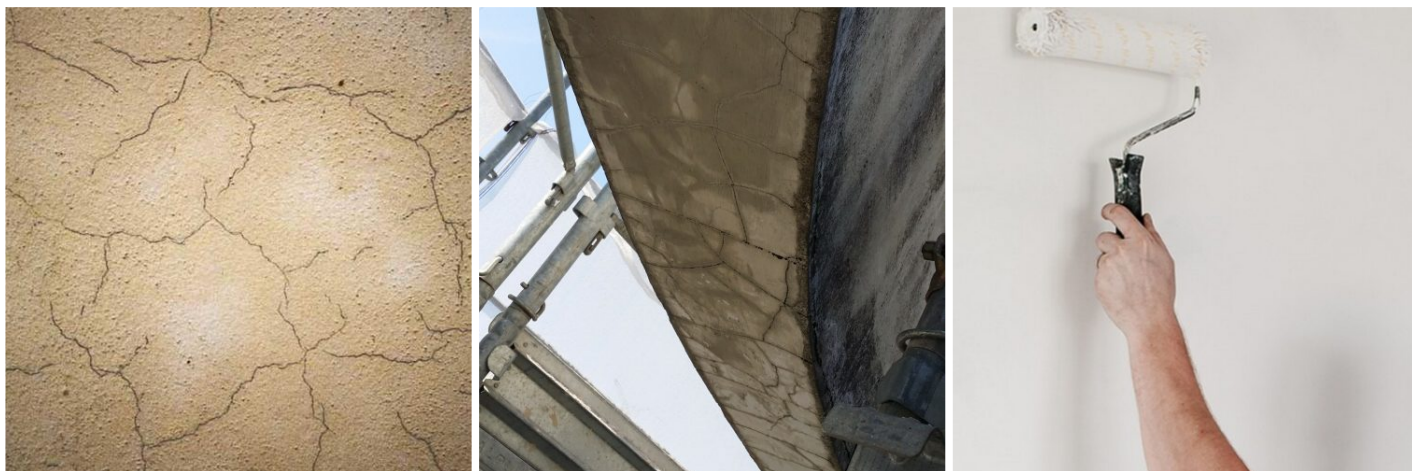
Protect from freezing. Store the product in its original packing, in a fresh and dry environment, avoiding frost and direct sunlight. Inadequate storage of the product may result in a loss of rheological performance.



Produced and distributed by **AZICHEM srl**
Via Giovanni Gentile, 16/A - 46044 Goito (MN), Italy
Tel: +39 0376.604185 / 604365
Fax: +39 0376 604398
www.azichem.com - info@azichem.com

Update of **02-04-2021**
Terms of sale and legal notices available at
<https://www.azichem.com/general-sales-conditions>
Total pages of this document: 3

PHOTO GALLERY



ADDITIONAL CONTENT



WARNINGS AND PRECAUTIONS

Avoid application in the presence of rainfall and high humidity.

Any fouling of the product on adjacent surfaces must be removed with Nitro thinner. The general information, along with any instructions and recommendations for use of this product, including in this data sheet and eventually provided verbally or in writing, correspond to the present state of our scientific and practical knowledge.

Any technical and performance data reported is the result of laboratory tests conducted in a controlled environment and thus may be subject to modification in relation to the actual conditions of implementation.

Azichem Srl does not assume any liability arising from inadequate characteristics related to improper use of the product or connected to defects arising from factors or elements unrelated to the quality of the product, including improper storage.

Those wishing to utilise the product are required to determine prior to use whether or not the same is suitable for the intended use, assuming all consequent responsibility.

The technical and characteristic details contained in this data sheet shall be updated periodically. For consultation in real time, please visit the website: www.azichem.com. The date of revision is indicated in the space to the side. The current edition cancels out and replaces any previous version.

Please note that the user is required to read the latest Safety Data Sheet for this product, containing chemical-physical and toxicological data, risk phrases and other information regarding the safe transport, use and disposal of the product and its packaging. For consultation, please visit: www.azichem.com.

It is forbidden to dispose of the product and/or packaging in the environment.



Produced and distributed by **AZICHEM srl**
Via Giovanni Gentile, 16/A - 46044 Goito (MN), Italy
Tel: +39 0376.604185 / 604365
Fax: +39 0376 604398
www.azichem.com - info@azichem.com

Update of **02-04-2021**
Terms of sale and legal notices available at
<https://www.azichem.com/general-sales-conditions>
Total pages of this document: 3