

Protech Road Line

Specific pigmented synthetic paint for horizontal road signs



Fast-drying refractive synthetic paint with excellent coverage and resistance to atmospheric agents, specially designed for painting horizontal road signs. Based on acrylic resin, specific plasticizers loaded with Rutile Titanium Dioxide, synthetic pigments resistant to UV rays, lamellar and crystalline charges, glass microspheres with a high refractive index and a specific mixture of solvents to balance drying in depth and in surface, allows to communicate the safety rules according to the provisions of the highway code both in the urban and extra-urban areas for the center lines, side lines, zebra stripes, stop bands and pedestrian crossings etc.

CUSTOMS CODE: 3209 1000

COMPONENTS: Single-component

APPEARANCE: Thick liquid

AVAILABLE COLORS: Request available colors

PACKAGING AND DIMENSIONS: Can 30 kg

FIELDS OF APPLICATION

Protech Road Line is specific for road markings on flooring, including roads: asphalt, cementitious substrates, porphyry, etc.

ALLOWED SUPPORTS

Concrete - Asphalt - Porphyry and natural stones

PREPARATION OF SUPPORTS

Remove all traces of dust. On a dry support, apply Protech Road Line according to the methods described in the instructions for use.

MODE OF USE

Protech Road Line, depending on the equipment and application methods, must be diluted, generally 5%, with a specific synthetic thinner for traffic island paints. Avoid applications in the presence of surface condensation, ice and make sure there is no flaking paint. Stir the product thoroughly before use.

APPLICATION METHODS



Paint roller - Sprayer - Low pressure airless nebulizer





TOOL CLEANING

Nitro thinner

KEY FEATURES

 Density: 1.55 – 1.75 kg/l
 Use wearing protective glasses

 Shelf-life: 6 months
 Use wearing protective gloves

TECHNICAL SPECIFICATIONS

ASTM D 1644
Dry residue **80 +/- 3 %**

ASTM D711
Deep hardening at 20°C **30 min**

ASTM D711
Dust-free time at 20°C **10 min**

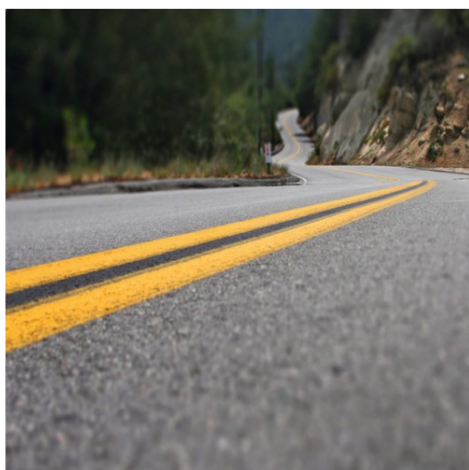
CONSUMPTION

Apply 1.30 kg of Protech Road Line per square metre of surface to be painted.

STORAGE AND CONSERVATION

Protect from freezing. Store the product in its original packing, in a fresh and dry environment, avoiding frost and direct sunlight. Inadequate storage of the product may result in a loss of rheological performance. Opened containers must be used immediately. Store the product at a temperature between +5°C and +35°C.

PHOTO GALLERY



Produced and distributed by **AZICHEM srl**
Via Giovanni Gentile, 16/A - 46044 Goito (MN), Italy
Tel: +39 0376.604185 / 604365
Fax: +39 0376 604398
www.azichem.com - info@azichem.com

Update of **01-04-2021**
Terms of sale and legal notices available at
<https://www.azichem.com/general-sales-conditions>
Total pages of this document: 3

ADDITIONAL CONTENT



WARNINGS AND PRECAUTIONS

A dry thickness of 400-500 μm is recommended. The general information, along with any instructions and recommendations for use of this product, including in this data sheet and eventually provided verbally or in writing, correspond to the present state of our scientific and practical knowledge.

Any technical and performance data reported is the result of laboratory tests conducted in a controlled environment and thus may be subject to modification in relation to the actual conditions of implementation.

Azichem Srl does not assume any liability arising from inadequate characteristics related to improper use of the product or connected to defects arising from factors or elements unrelated to the quality of the product, including improper storage.

Those wishing to utilise the product are required to determine prior to use whether or not the same is suitable for the intended use, assuming all consequent responsibility.

The technical and characteristic details contained in this data sheet shall be updated periodically. For consultation in real time, please visit the website: www.azichem.com. The date of revision is indicated in the space to the side. The current edition cancels out and replaces any previous version.

Please note that the user is required to read the latest Safety Data Sheet for this product, containing chemical-physical and toxicological data, risk phrases and other information regarding the safe transport, use and disposal of the product and its packaging. For consultation, please visit: www.azichem.com.

It is forbidden to dispose of the product and/or packaging in the environment.

