

Osmocem Flex

Plasto-elastic waterproofing cement for terraces and masonry



A two-component osmotic cementitious waterproofing agent in water dispersion, being a modified polymer that is highly flexible and deformable, with a plastic-elastic conduct. Application by trowel, brush or roller. Ideal for waterproofing terraces, balconies and swimming pools, prior to laying the tiled or brick coating. Suitable for contact with drinking water.

CUSTOMS CODE: 3824 5090

COMPONENTS: Two-components

APPEARANCE: Powder + Liquid

AVAILABLE COLORS: White / Gray

PACKAGING AND DIMENSIONS: Bag 24 kg [A] - Plastic can 8 kg [B] - Kit: 1 Bag 24 kg [A] + 1 Plastic can 8 kg [B] - Pallet: 50 x (Bag 24 kg [A]) - Pallet: 50 x (Plastic can 8 kg [B])

OBTAINED CERTIFICATIONS AND REGULATIONS



FEATURES AND BENEFITS

Osmocem Flex is certified for compatibility with contact and containment of drinking water and food substances (certificate n. 04/2010 of the Laboratorio Analysis Service di Settimo di Pescantina - VR). Two-component professional product. Proportioning of component A + component B specially designed to give the installer certainty of the result and guarantee of impeccable work: the tank of component B (8 kg) contains slightly more compared to the quantity necessary for mixing the bag (24 kg), allowing the installer, before laying the product, to withdraw from the tank up to 1 lt of the special resin of component B, dilute with 1 lt of water and use this aqueous emulsion to prime the application support; in this way at least three extraordinarily effective operations are performed with a simple and rapid priming: a) expulsion of the air from the superficial porosity fillers (with drastic reduction of the well-known blisters that occur on low thickness elastic products); b) reduction of the support absorption (to guarantee a suitable setting of the waterproof finish); c) increase in adhesion thanks to the deep penetration of the polymeric component.

FIELDS OF APPLICATION

Moisture-proofing concrete containment works (tubs, swimming pools, pipes, ducts, areas containing food, etc.). Moisture-proofing balconies, terraces, bathrooms, showers, etc., prior to laying successive plasters and screeds, ceramic coatings provided they are sufficiently porous and absorbent and free from any waterproofing and / or water-repellent surface treatment, whether chemical (siloxanes, epoxies, polyurethanes, etc.) or natural (wax-up). Waterproofing coating of earth-retaining masonry, micro-cracked plaster. Deformable finishing coats in general.

ALLOWED SUPPORTS

Concrete - Tiles - Floor screed

PREPARATION OF SUPPORTS

The application surfaces must be clean, free of dirt, crumbly and inconsistent parts, dust, water-repellent treatments in general, etc., slightly roughened with a suitable preparation method (degree of roughening $> 2\text{mm}$, or ≥ 3 on the ICRI Scale - International Concrete Repair Institute). Particularly dry supports should be slightly moistened with water. It is always advisable to prime the application support with approximately 100-150 g/m² of COMPONENT B adhesive latex in order to facilitate the expulsion of air from the surface porosity (pore stopper), reduce the absorption of the support and increase adhesion to the support. For applications on plasterboard, first apply a coat of Bond Plus as a primer. In the case of large covering surfaces on flat roofs or terraces soaked in water, it is necessary to provide suitably located steam vent "chimneys". Do not apply on supports with water leaks or any form of moving water, which must be previously blocked and remedied to prevent the product from washing away during the hardening and setting phase.

MODE OF USE

Osmocem Flex comes in two predosed components that must be thoroughly mixed, with mixers with a low number of revolutions (maximum. 300 Revs/minute) until a homogeneous lump-free mixture is obtained. The addition of other ingredients should be absolutely avoided. The tank of component B (8 kg) contains slightly more compared to the quantity necessary for mixing the bag (24 kg), allowing the installer, before laying the product, to withdraw from the tank up to 1 lt of the special resin of component B, dilute with 1 lt of water and use this aqueous emulsion to prime the application support (see also the ADDITIONAL INFORMATION section). In case of exceptionally arid climate, it is possible to make moderate consistency corrections, where necessary, adding water up to a maximum of 8%. When waterproofing terraces and balconies, two coats, each about 1.5 mm thick (2.2 kg/m² per coat), of Osmocem Flex should be applied, each coat should be applied when the previous one looks stable (at least 4 hours later at 20°C). It is recommended to interpose the fibreglass alkaline-resistant mesh Armaglass 160 in the thickness of Osmocem Flex, between the first and second coat. The self-adhesive butyl band Proband should also be placed between the floor screeds and the elevation walls. Finally, it is advisable to place the special elastic band Elastotex 120 or Elastotex 120 Cloth, at any expansion joints, securing it with the same Osmocem Flex.

APPLICATION METHODS

Plastering machine - Brush - Pump - Paint roller - Spatula - Scrubbing brush

TOOL CLEANING

Water

KEY FEATURES



Maximum diameter of aggregate: 0.6 mm



Pot-life: 60 min



Suitable for contact with drinking water

A:B Mixing ratio: 3:1 _



Shelf-life: 12 months



Temperature of use: +8 / +30 °C



Produced and distributed by **AZICHEM srl**
Via Giovanni Gentile, 16/A - 46044 Goito (MN), Italy
Tel: +39 0376.604185 / 604365
Fax: +39 0376 604398
www.azichem.com - info@azichem.com

Update of **14-02-2024**
Terms of sale and legal notices available at
<https://www.azichem.com/general-sales-conditions>
Total pages of this document: 4

TECHNICAL SPECIFICATIONS

UNI EN 1015-6

Density **1800 kg/m³**

UNI EN 13057

Capillary absorption **0.06 kg•h^{0.5}/m²**

EN 1062-6

Permeability to CO₂ **15.100 (Sd=55 m) μ**

EN 1062-3

0.034 kg•h^{0.5}/m²

+5° C EN 1062-7

Classe A3

EN ISO 7783-1

Degree of water vapor transmission **1.430 (Sd=3.2 m) μ**

+5° C EN 1062-7

Dynamic crack bridging **Classe B2**

EN 1542

> 1.0 MPa

Bridging capacity on wide cracks **0.5-1.0 mm**

UNI EN 1015-12

Bonding force **1.50 N/mm²**

DIN 53504

Longitudinal elongation at break **17.2 %**

Sd EN ISO 7783-1

Permeability to water vapor **CLASS I**

A:B

Mixing ratio of the components **3:1**

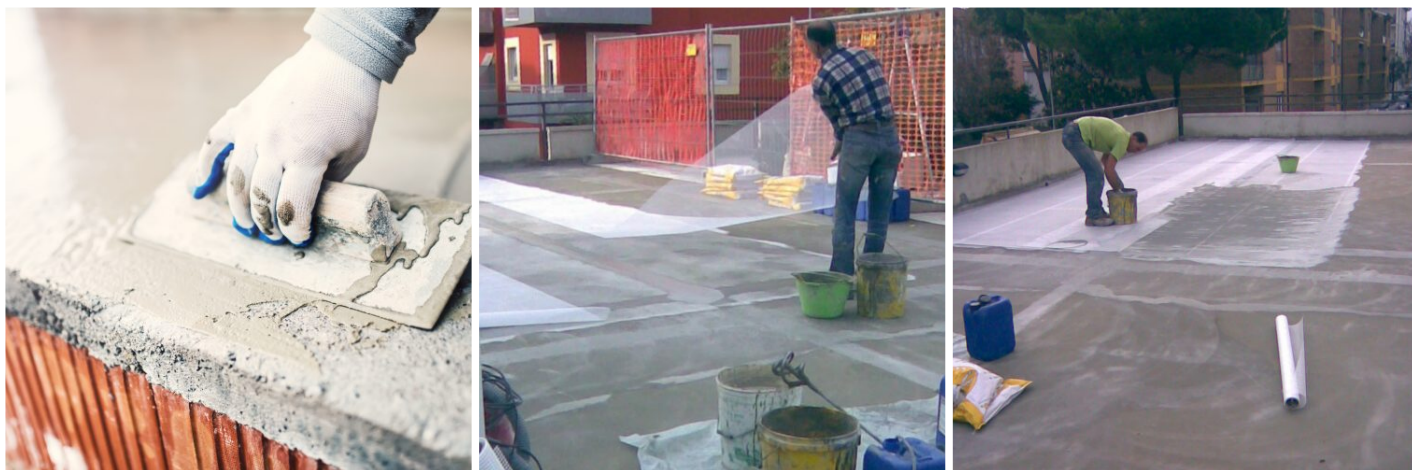
CONSUMPTION

Approximately 1.8 kg/m² of Osmocem Flex for each millimetre of thickness to be made.

STORAGE AND CONSERVATION

Store the product in its original packing, in a fresh and dry environment, avoiding frost and direct sunlight. Inadequate storage of the product may result in a loss of rheological performance. Protect from humidity.

PHOTO GALLERY



Produced and distributed by **AZICHEM srl**
Via Giovanni Gentile, 16/A - 46044 Goito (MN), Italy
Tel: +39 0376.604185 / 604365
Fax: +39 0376 604398
www.azichem.com - info@azichem.com

Update of **14-02-2024**
Terms of sale and legal notices available at
<https://www.azichem.com/general-sales-conditions>
Total pages of this document: 4

ADDITIONAL CONTENT



WARNINGS AND PRECAUTIONS

Do not use Osmocem Flex on strongly degraded or non-adhering supports, since it would reduce the waterproofing quality. Do not apply on little or non-porous substrates or previously coated with water-repellent treatments in general, if not after appropriate roughening by bush hammers, sanders and equipment suitable for preparatory treatments of substrates, or after appropriate treatment with suitable polymeric primers.

The general information, along with any instructions and recommendations for use of this product, including in this data sheet and eventually provided verbally or in writing, correspond to the present state of our scientific and practical knowledge.

Any technical and performance data reported is the result of laboratory tests conducted in a controlled environment and thus may be subject to modification in relation to the actual conditions of implementation.

Azichem Srl does not assume any liability arising from inadequate characteristics related to improper use of the product or connected to defects arising from factors or elements unrelated to the quality of the product, including improper storage.

Those wishing to utilise the product are required to determine prior to use whether or not the same is suitable for the intended use, assuming all consequent responsibility.

The technical and characteristic details contained in this data sheet shall be updated periodically. For consultation in real time, please visit the website: www.azichem.com. The date of revision is indicated in the space to the side. The current edition cancels out and replaces any previous version.

Please note that the user is required to read the latest Safety Data Sheet for this product, containing chemical-physical and toxicological data, risk phrases and other information regarding the safe transport, use and disposal of the product and its packaging. For consultation, please visit: www.azichem.com.

It is forbidden to dispose of the product and/or packaging in the environment.

