

Grout 447 SFR

Reinforced fibre castable mortar for fast reconstruction operations



Castable mortar, reinforced with steel fibres, fast-curing, based on portland cement, special binders, selected siliceous aggregates and specific rheologic agents, for repairs, reconstructions and anchorages for fast re-use, in road works and in concrete, even in severe weather conditions and at low temperatures.

CUSTOMS CODE: 3824 5090

COMPONENTS: Single-component

APPEARANCE: Powder

AVAILABLE COLORS: Gray / Black

PACKAGING AND DIMENSIONS: Bag 25 kg - Pallet: 50 x (Bag 25 kg)

OBTAINED CERTIFICATIONS AND REGULATIONS



FIELDS OF APPLICATION

Repairs, reconstructions and anchorages for fast re-use, in road works and in concrete, even in severe weather conditions and at low temperatures. Quick anchoring of metal partitions and elements, grouts, equipment installation, street manhole covers, etc.

ALLOWED SUPPORTS

Concrete - Asphalt

PREPARATION OF SUPPORTS

The surfaces should be clean and free of any soiling, crumbling and non-adhering parts, dust, salt efflorescence, milt of cement etc., free of oils, greases, properly hardened and compact. An adequate roughening of the surfaces by scarifying, sandblasting etc. is always necessary in order to obtain the maximum adhesion values to the substrate. The optimal values are obtained with high pressure hydro-scarification. Bare the irons undergoing disruptive oxidation or deeply oxidized, removing the rust of the exposed irons (by sandblasting or abrasive brushes).

MODE OF USE

Given the peculiarities of the product, it is advisable to adjust the mixing water as required from time to time, taking care not to make the product too fluid. Pour about 15% of water on the weight of the bag in the mixer, gradually add the product and the water still required, until the desired consistency is obtained. Continue to mix until a homogenous lump-free mixture is obtained.

APPLICATION METHODS

Brick trowel - Pour out - Finishing trowel - Spatula

TOOL CLEANING

Water

KEY FEATURES

-  Maximum diameter of aggregate: 5 mm
-  Mix with water: 12 - 14 %
-  Quick setting product
-  Temperature of use: 0 / +25 °C
-  UV-resistant
-  Min. recommended thickness: 2 cm
-  Pot-life: 10 - 20 min
-  Shelf-life: 12 months
-  Use wearing protective gloves

TECHNICAL SPECIFICATIONS

UNI EN 12190
Compressive strength after 1,5 hours > **2 N/mm²**

UNI EN 12190
Compressive strength after 1 day > **50 N/mm²**

UNI EN 12190
Compressive strength after 28 days > **90 N/mm²**

UNI EN 196/1
Flexural strength after 7 days > **12 N/mm²**

EN 13295
Resistance to carbonatation > **reference concrete**

EN 13412
Static elastic modulus **30000 N/mm²**

Chloride content < **0.01 %**

Reaction to fire **A1 (incombustibile)**

UNI EN 12190
Compressive strength after 4 hours > **10 N/mm²**

UNI EN 12190
Compressive strength after 7 days > **70 N/mm²**

UNI EN 196/1
Flexural strength at 1 day > **8 N/mm²**

UNI EN 196/1
Flexural strength after 28 days > **13 N/mm²**

UNI EN 1015-6
Density **2100 kg/m³**

Thermal compatibility > **2 MPa**

Capillary absorption **0.5**

UNI PdR 88:2020
Total recycled content ≥ **3.8 %**

CONSUMPTION

Approximately 21,50 kg/m² of Grout 447 SFR for every centimetre of thickness to be implemented (approximately 2150 kg per cubic metre).



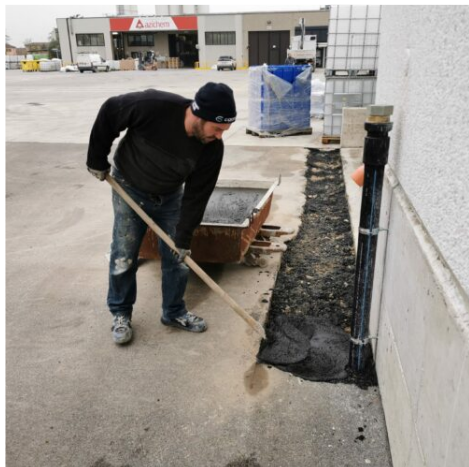
Produced and distributed by **AZICHEM srl**
Via Giovanni Gentile, 16/A - 46044 Goito (MN), Italy
Tel: +39 0376.604185 / 604365
Fax: +39 0376 604398
www.azichem.com - info@azichem.com

Update of **10-06-2024**
Terms of sale and legal notices available at
<https://www.azichem.com/general-sales-conditions>
Total pages of this document: 4

STORAGE AND CONSERVATION

Store the product in its original packing, in a fresh and dry environment, avoiding frost and direct sunlight. Inadequate storage of the product may result in a loss of rheological performance. Protect from humidity.

PHOTO GALLERY



ADDITIONAL CONTENT



Produced and distributed by **AZICHEM srl**
Via Giovanni Gentile, 16/A - 46044 Goito (MN), Italy
Tel: +39 0376.604185 / 604365
Fax: +39 0376 604398
www.azichem.com - info@azichem.com

Update of **10-06-2024**
Terms of sale and legal notices available at
<https://www.azichem.com/general-sales-conditions>
Total pages of this document: 4

WARNINGS AND PRECAUTIONS

The mortar should be laid within the specified time of workability, which may change depending on the temperature. The general information, along with any instructions and recommendations for use of this product, including in this data sheet and eventually provided verbally or in writing, correspond to the present state of our scientific and practical knowledge.

Any technical and performance data reported is the result of laboratory tests conducted in a controlled environment and thus may be subject to modification in relation to the actual conditions of implementation.

Azichem Srl does not assume any liability arising from inadequate characteristics related to improper use of the product or connected to defects arising from factors or elements unrelated to the quality of the product, including improper storage.

Those wishing to utilise the product are required to determine prior to use whether or not the same is suitable for the intended use, assuming all consequent responsibility.

The technical and characteristic details contained in this data sheet shall be updated periodically. For consultation in real time, please visit the website: www.azichem.com. The date of revision is indicated in the space to the side. The current edition cancels out and replaces any previous version.

Please note that the user is required to read the latest Safety Data Sheet for this product, containing chemical-physical and toxicological data, risk phrases and other information regarding the safe transport, use and disposal of the product and its packaging. For consultation, please visit: www.azichem.com.

It is forbidden to dispose of the product and/or packaging in the environment.

