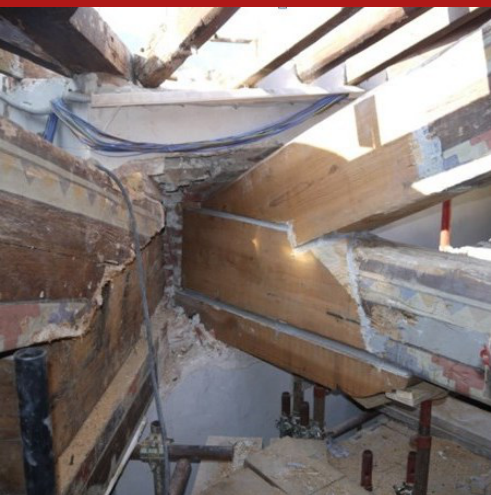


# Epomalta LC

## Epoxy mortar for the reconstruction of wooden structures



A castable epoxy mortar, comprised of a two-component epoxy adhesive (A + B) to be integrated with a mixture of select mineral aggregates with a maximum diameter of 4 mm. It is used for anchoring, restoring industrial flooring, the localised regeneration of wooden beam heads, repairs and building reconstructions in general, to be completed by pouring on-site, after creating dedicated containment formwork suitably waterproofed with a release agent.

**CUSTOMS CODE:** 3907 3000

**COMPONENTS:** Three-components

**APPEARANCE:** Liquid + Liquid + Powder

**AVAILABLE COLORS:** Light gray

**PACKAGING AND DIMENSIONS:** Can 1 kg [A] - Can 0.5 kg [B] - Pail 7.5 kg [C] - Kit: 1 Can 1 kg [A] + 1 Can 0.5 kg [B] + 1 Pail 7.5 kg [C]

## OBTAINED CERTIFICATIONS AND REGULATIONS



## FIELDS OF APPLICATION

Anchoring with precision alignment of industrial machinery. Anchoring of metal elements. Localised restoration of industrial flooring subject to high static and dynamic loads. Reconstruction of joints in industrial flooring. Levelling of screeds and flooring. Localised regeneration of wooden beam heads. Reconstruction of construction artefacts in general.

## ALLOWED SUPPORTS

Concrete - Wood - Floor screed - Steel - Calcestruzzo armato

## PREPARATION OF SUPPORTS

The surfaces on which it is to be applied are to be clean, dry, free from dust, dirt, and the like, as well as being adequately consistent. Be sure to remove any deteriorated parts of the surface.

## MODE OF USE

Combine component B with component A, being sure to add all of the material contained in the packages then thoroughly mixing with a low-speed mixer until a perfectly homogeneous mixture is obtained. Add the required amount of "charger" (component C), continuing to mix until reaching the original homogeneity of the adhesive system. As regards the anchoring of machinery, before positioning the machine, remove any deteriorated concrete and loose parts from the foundation surface, including any parts saturated with oil or grease. Check that air vent holes have been made on the base plate of the machine. During the first 10 hours following installation, ensure the substrate is not subject to vibrations from other machinery. Regarding the reconstruction of the wooden beam heads, apply in the manner dictated by the type of operation, subject to: - beam shoring - insertion of reinforcing bars - the construction of suitable formwork - applying (pouring) cement. Do not apply to wet and/or powdery media. Use the product immediately after mixing.





## APPLICATION METHODS





Brick trowel - Pour out - Spatula

## TOOL CLEANING

Thinner for resins

## KEY FEATURES

-  Density: 1.08 kg/dm<sup>3</sup>
-  Pot-life: 60 min
-  Solvent-free
-  Use wearing protective gloves

-  Maximum diameter of aggregate: 2.5 mm
-  Shelf-life: 12 months
-  Temperature of use: +5 / +35 °C
-  UV-resistant

## TECHNICAL SPECIFICATIONS

UNI EN 12190  
Compressive strength after 28 days **80 N/mm<sup>2</sup>**

UNI EN 1544  
**0.32 mm**

UNI EN 1542  
Bonding force **3.5 N/mm<sup>2</sup>**

UNI EN 13036-4  
Skid resistance **CLASS I**

UNI EN 1015-17  
Chloride content **0.01 %**

a 20°C  
Touch hardening at 20°C **2 - 4 h**

UNI EN 13412  
Static elastic modulus **21000 N/mm<sup>2</sup>**

UNI EN 13057  
Capillary absorption **0.01**

## CONSUMPTION

Approximately 1.55 kg of Epomalta LC is required for each cubic decimetre of volume to be reconstructed (about 1550 kg per cubic metre).

## STORAGE AND CONSERVATION

Protect from freezing. Store the product in its original packing, in a fresh and dry environment, avoiding frost and direct sunlight. Inadequate storage of the product may result in a loss of rheological performance. Store the product at a temperature between +5°C and +35°C.



## PHOTO GALLERY



## ADDITIONAL CONTENT



## WARNINGS AND PRECAUTIONS

The general information, along with any instructions and recommendations for use of this product, including in this data sheet and eventually provided verbally or in writing, correspond to the present state of our scientific and practical knowledge. Any technical and performance data reported is the result of laboratory tests conducted in a controlled environment and thus may be subject to modification in relation to the actual conditions of implementation.

Azichem Srl does not assume any liability arising from inadequate characteristics related to improper use of the product or connected to defects arising from factors or elements unrelated to the quality of the product, including improper storage. Those wishing to utilise the product are required to determine prior to use whether or not the same is suitable for the intended use, assuming all consequent responsibility.

The technical and characteristic details contained in this data sheet shall be updated periodically. For consultation in real time, please visit the website: [www.azichem.com](http://www.azichem.com). The date of revision is indicated in the space to the side. The current edition cancels out and replaces any previous version.

Please note that the user is required to read the latest Safety Data Sheet for this product, containing chemical-physical and toxicological data, risk phrases and other information regarding the safe transport, use and disposal of the product and its packaging. For consultation, please visit: [www.azichem.com](http://www.azichem.com). It is forbidden to dispose of the product and/or packaging in the environment.



Produced and distributed by **AZICHEM srl**  
Via Giovanni Gentile, 16/A - 46044 Goito (MN), Italy  
Tel: +39 0376.604185 / 604365  
Fax: +39 0376 604398  
[www.azichem.com](http://www.azichem.com) - [info@azichem.com](mailto:info@azichem.com)

Update of **15-06-2022**  
Terms of sale and legal notices available at  
<https://www.azichem.com/general-sales-conditions>  
**Total pages of this document: 3**