

# Consilex No-Rust

## Corrosion inhibitor by impregnation for concrete structures



Consilex No-Rust is a powerful non-toxic corrosion inhibitor, to be applied to the surfaces of concrete structures and which, thanks to its particular chemical nature, migrates within the conglomerate and deposits on its particular internal reinforcement substances that preserve their integrity over time, by inhibiting oxidation phenomena.

**CUSTOMS CODE:** 3824 9970

**COMPONENTS:** Single-component

**APPEARANCE:** Liquid

**AVAILABLE COLORS:** Amber

**PACKAGING AND DIMENSIONS:** Plastic can 10 kg - Plastic can 25 kg - Plastic can 5 kg

## FEATURES AND BENEFITS

Consilex No-Rust performs its function effectively based on the migration phenomenon, which allows it to deposit on the reinforcement of the treated structure of particular corrosion inhibiting agents, even applied to the outer surface of the structure itself! The particular formulation of Consilex No-Rust allows its effectiveness not to be compromised by the presence of high levels of chlorides in the conglomerate. Alternative nitrite-based products, indeed, in the presence of chlorides, they may even have a negative effect on the corrosion of the reinforcing rods. Consilex No-Rust, on the other hand, can be used effectively on concretes whose irons have already started to suffer corrosive effects and partial oxidation, also due to chlorides.

## FIELDS OF APPLICATION

Preventive protection of existing concrete structures, such as public works, road works, buildings, hydraulic works, etc.

## ALLOWED SUPPORTS

Concrete - Cement-based or lime-based mortars - Prefabricated concrete

## PREPARATION OF SUPPORTS

Thoroughly clean the support before applying the product, removing traces of fats, oils, dirt, incrustations, fouling, etc. Remove any paints, coatings, films or membranes that may be present on the surface: the product works by penetration, so it must come into direct contact with the surface of the concrete.

## MODE OF USE

Spray-apply on the surfaces to be treated. In the case of structures for which there is a risk that corrosion phenomena are already in progress, apply two coats. Allow the surface to dry for a few minutes after application. If you squirt the product accidentally on the glasses, paints, frames, etc., simply wash with abundant water. In case the treated surface should then be treated or coated with paint or other coatings, please note that a thin layer of inhibitor may be deposited on the surface. In this case, wash with plenty of water and carry out preliminary adhesion tests on the coating that you intend to use. In case the tests fail, proceed with hydrocleaning or slightly sanding to remove any residue. Carry out preliminary tests in this case as well.

## APPLICATION METHODS

Suffuse - Low pressure airless nebulizer - Sprayer

## TOOL CLEANING

Water

## KEY FEATURES



Density: 1.03 kg/dm<sup>3</sup>



Solvent-free



Use wearing protective gloves



Shelf-life: 24 months



Temperature of use: >0 °C

## TECHNICAL SPECIFICATIONS

The product doesn't create film

pH **9.0-9.5**

## CONSUMPTION

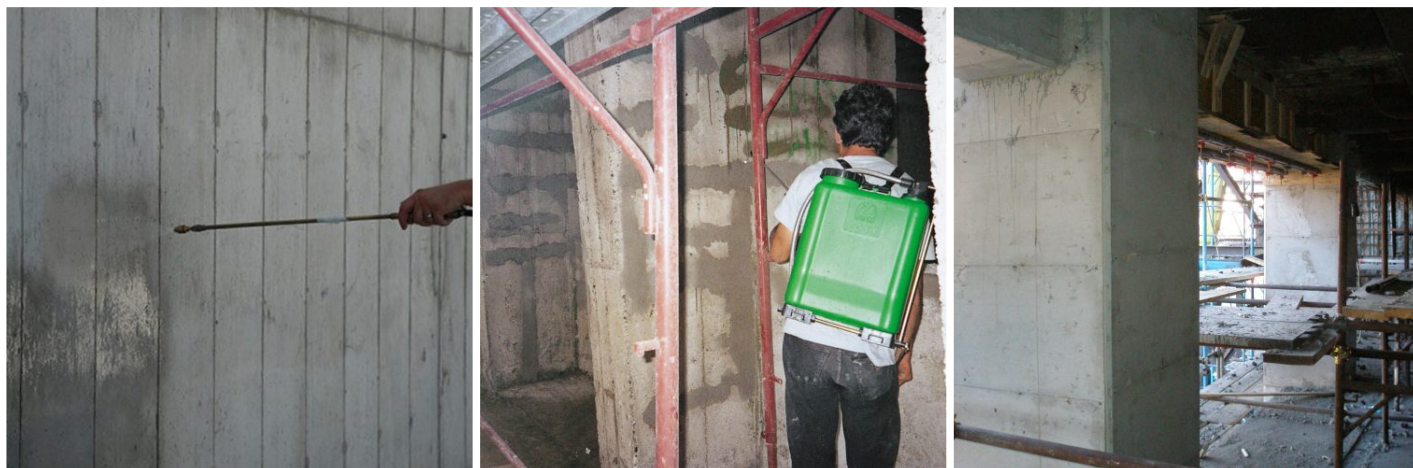
Apply from 0.15 to 0.35 kg of Consilex No-Rust per square metre of surface to be treated.

## STORAGE AND CONSERVATION

Protect from freezing. Store the product in its original packing, in a fresh and dry environment, avoiding frost and direct sunlight.



## PHOTO GALLERY



## ADDITIONAL CONTENT



## WARNINGS AND PRECAUTIONS

The general information, along with any instructions and recommendations for use of this product, including in this data sheet and eventually provided verbally or in writing, correspond to the present state of our scientific and practical knowledge. Any technical and performance data reported is the result of laboratory tests conducted in a controlled environment and thus may be subject to modification in relation to the actual conditions of implementation.

Azichem Srl does not assume any liability arising from inadequate characteristics related to improper use of the product or connected to defects arising from factors or elements unrelated to the quality of the product, including improper storage. Those wishing to utilise the product are required to determine prior to use whether or not the same is suitable for the intended use, assuming all consequent responsibility.

The technical and characteristic details contained in this data sheet shall be updated periodically. For consultation in real time, please visit the website: [www.azichem.com](http://www.azichem.com). The date of revision is indicated in the space to the side. The current edition cancels out and replaces any previous version.

Please note that the user is required to read the latest Safety Data Sheet for this product, containing chemical-physical and toxicological data, risk phrases and other information regarding the safe transport, use and disposal of the product and its packaging. For consultation, please visit: [www.azichem.com](http://www.azichem.com). It is forbidden to dispose of the product and/or packaging in the environment.

